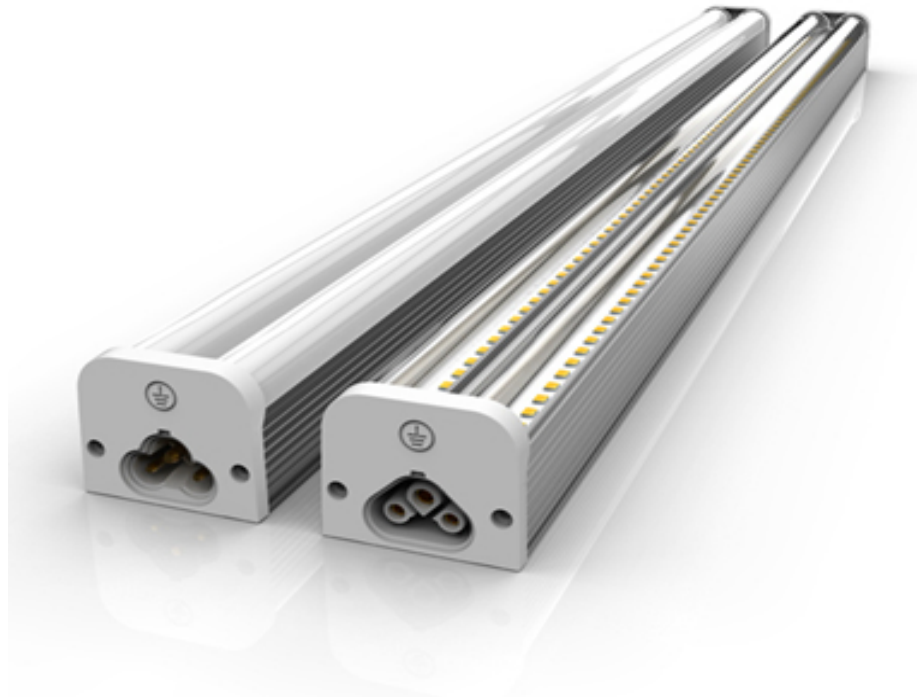




Linear Double T5 Fixture





Products Specification

Ordering Information

Example: ICS-BR-LDT5-4-30-120V-50K-INDV-FR-SP-DIM

	2' length	3' length	4' length	4' & 5' length	6' length	8' length
	ICS-BR- LDT5-2-15	ICS-BR- LDT5-3-25	ICS-BR- LDT5-4-30	ICS-BR- LDT5-4/5-40	ICS-BR- LDT5-6-44	ICS-BR- LDT5-8-60
LED Wattage	15W	25W	30W	40W	44W	60W
Input Voltage	120-277VAC 50/60Hz					
Luminous Flux*	1,800lm	3,000lm	3,600lm	4,800lm	5,280lm	7,780lm
Luminous Flux**	1,530lm	2,550lm	3,060lm	4,080lm	4,488lm	6,613lm
Chip Efficiency	130 lm/watt					
LED Type	Epistar (standard)					
Lens Material	Polycarbonate with 95% transmission					
IP Rating	IP 42					
CRI	≥82					
THD	<20%					
PF	≥93%					
Certificates	CE, Rohs, UL, DLC Premium					

Note: 8' (2400mm) - 200W/120VAC; 200W/277VAC

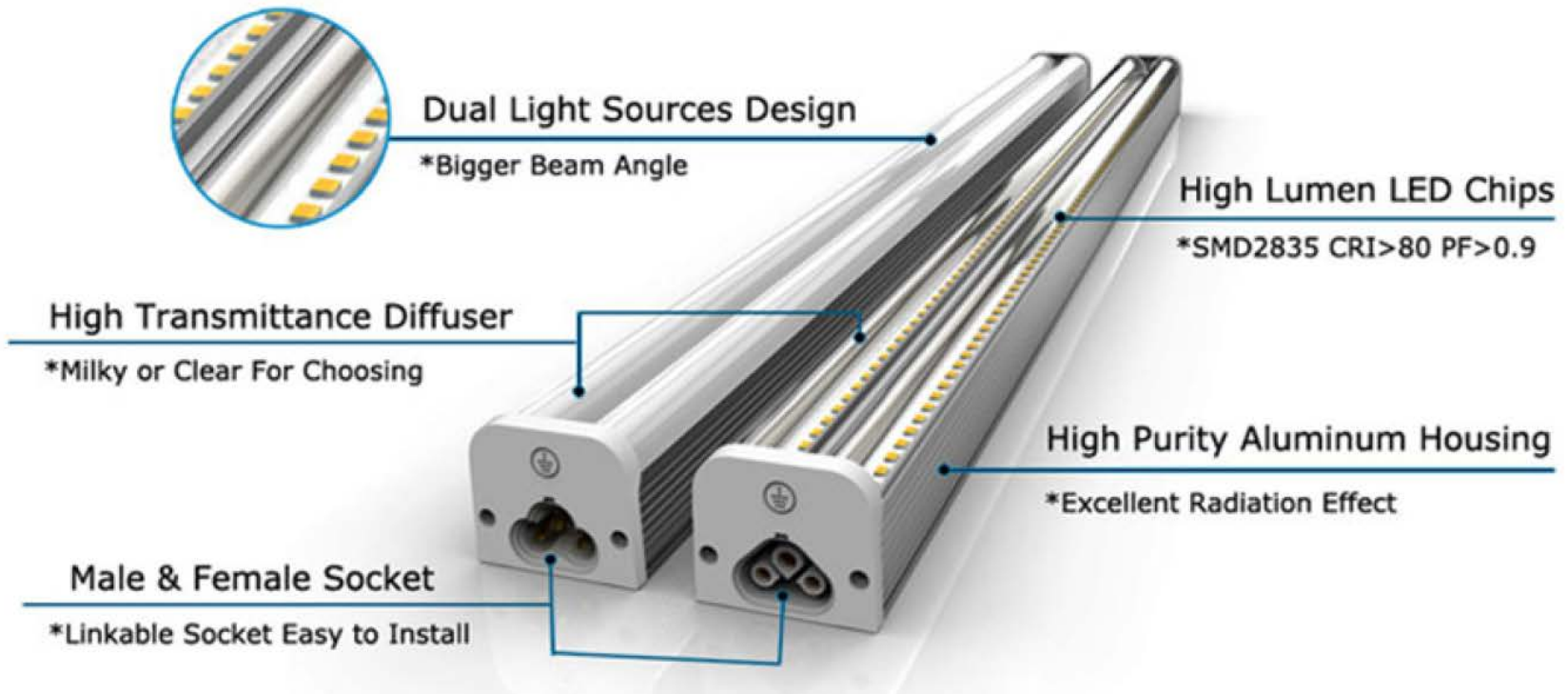
* Based on 5000K @ +/-10lm variance with clear lens

** Based on 5000K @ +/-10lm variance with frosted lens



Other option types and ordering details:

ORDERING DETAILS	OPTIONAL DESCRIPTIONS
120, 277, 347	Voltage types: 120V, 100-277V, 120V-347V,
30K, 40K, 50K, 57K	3000-3500K, 4000-4500K, 5000-5500K, 5700-6000K
Fixture Connections	PWR, (9" Power – not connected to another fixture), INL (In-Line Connection w/ frosted end caps), LIK (9" Male to Female)
Designer Connections	L, T, + (w/light and frosted end caps)
FR, CS	Lens: Frosted (@106lm/watt) or Clear (@120lm/watt)
Mounting Options	SC (Standard Flush Mount Clip), SP (Suspension Clip and Cable), MC (Magnetic Clip), SC (Double Spring Clip w/rear plug)
Functions	NAA (none), PIR (Motion Sensor), DIM (Triac Dimming)







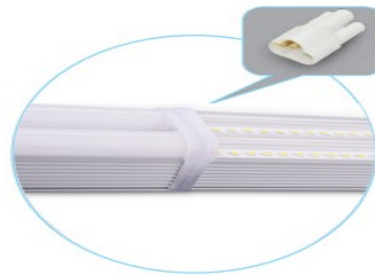
Connection Types:



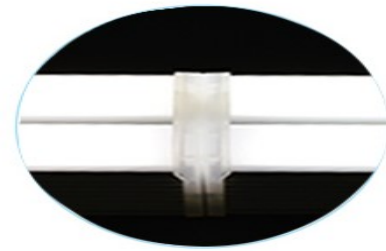
Power Cord
AC100-277V Input



Linkable Connector
Male-female Cable



In-line Connection
Small Connector



Seamless in-line & no dark
shadow connection

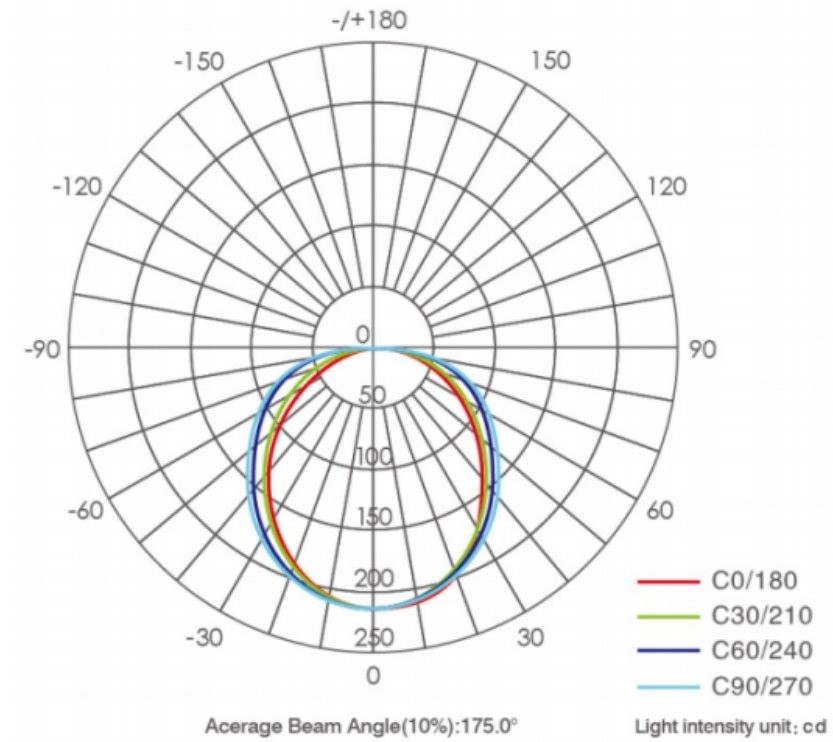
Wire Details: White - N, Black - L, Yellow/Green - Ground

Designer Connectors (L Shape):



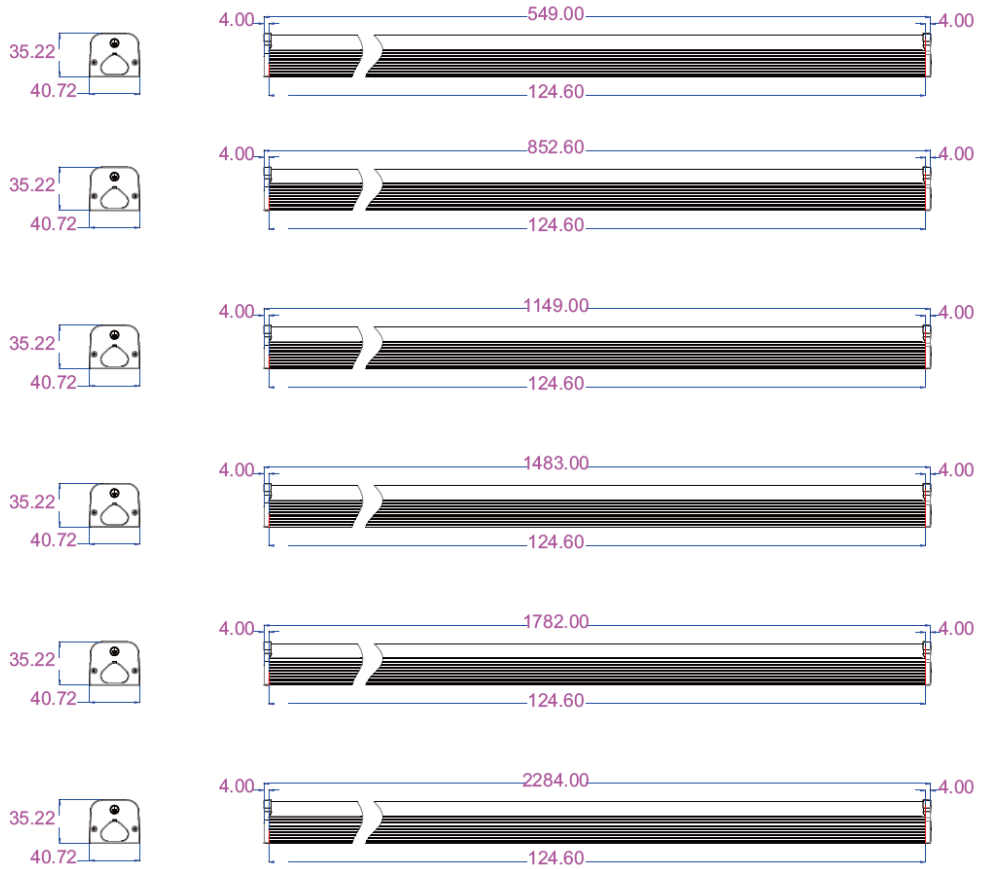


Photometric Pattern: Clear Lens





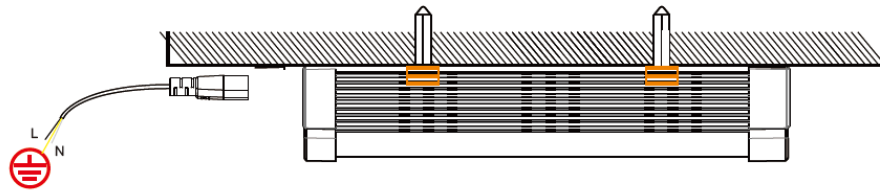
Dimensions:



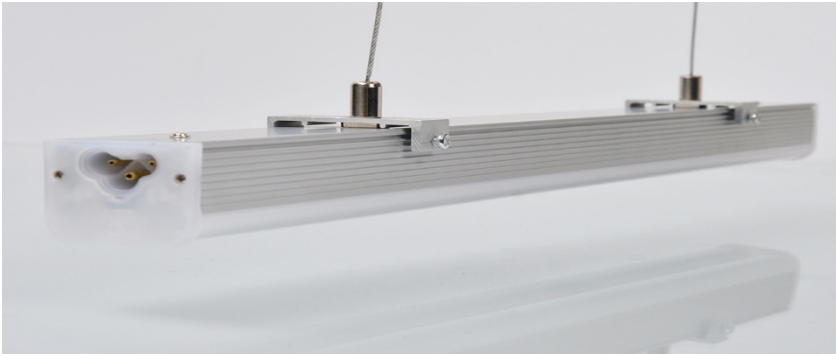


Mounting Options:

Flush Mount

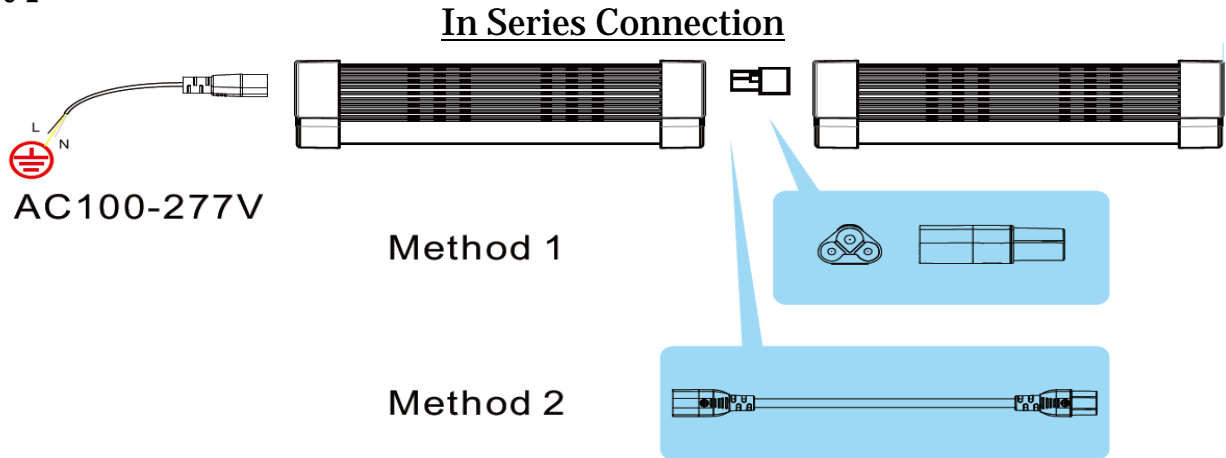


Suspension Mount





Connection Types:

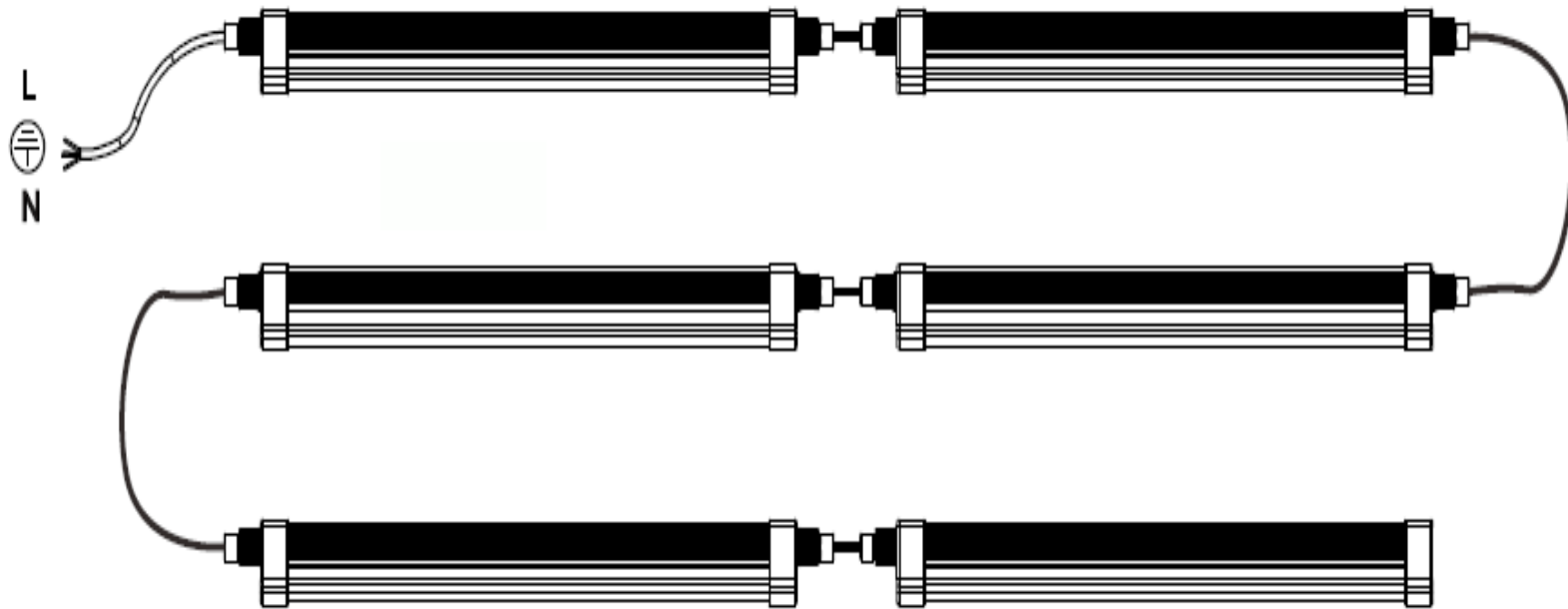


Rear Connection





Max Connection: 200W





- UL Listed
- DLC Listed
- 5 year warranty
- Easy and quick installation

Applications: Grocery Stores, Supermarkets, Gas Stations, Airports, Rail/Bus Stations, Parking Garages/Structures, Food & Drug processing Facilities, Commercial Freezers, Breweries, Industrial Warehouses, Factory Task Lighting, Car Washes

Products specifications, pictures, materials and details may change due to technology advancements. Bratic reserves the right to update any and all data without notification. Bratic T&C's of Sale apply.

! WARNING

- **Disconnect power before installation and must be installed by licensed electrician.**
- **Please verify correct input power range.**
- **Do not use in the outdoor environment.**
- **Do not use if the product does not operate properly**
- **Check connections after the power is turned off, in case of failure replace the fixture**

