

New Type T8 Tube

T8-Tube is an upgraded version Fluorescent tube replacent with LED. It has the best configuration of brightness and power efficiency.

T8-Tube is designed to replace medium bi-pin T8 and T12 fluorescent tubes. T8-tube fits directly into most fluorescent fixtures providing a simple upgrade to high quality LED lighting. T8-tube is optimized to provide light outputs comparable fluorescent and delivers the immediate benifits of white-LED lighting; long lifetime, no maintenance, high efficiency, no mercury, no recycling, no flickering, no buzzing, instant start, cold temperature operation, and high quality light. It provides energy savings of up to 75% over fluorescent applications that last for long in the situation such as stairwells, corridors, warehouses, and remote locations. The high quality T8-tube replacement tube is constructed from extruded aluminum to provide a virtually unbreakable, vandal proof lighting solution.

Why our T8-Tibe ?

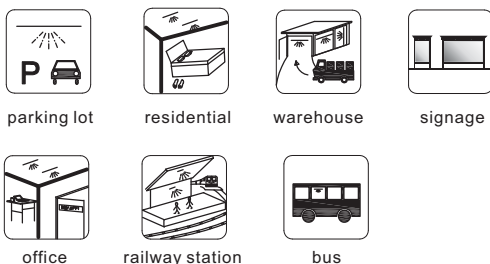
- Longer life
- 50%~75% Energy-saving over Fluorescent tubes
- Solid State, high shock/vibration resistant
- Works without ballast
- No RF interference, No fickering or buzzing
- Quick and easy installation to minimize retrofit costs
- Minimum maintenance costs, Produces little Heat
- No Mercury and other hazardous materials, fully RoHS-compliant
- Continuous operation for white LEDs
- 20°C to 40°C, perfect for environments with extreme climates
- Epistar+Intermatix LED packaging solution, no patent trouble
- The newest design
- The best cost-effective
- Completely insulated electrical design for maximum safety



Technical Parameters

- Standard length 60cm / 120cm / 150cm
- Rated input voltage 100-277V AC, 50/60Hz
- Power: 9W/ 18W / 22W
- PF (power factor) >0.92
- SMD2835 LED

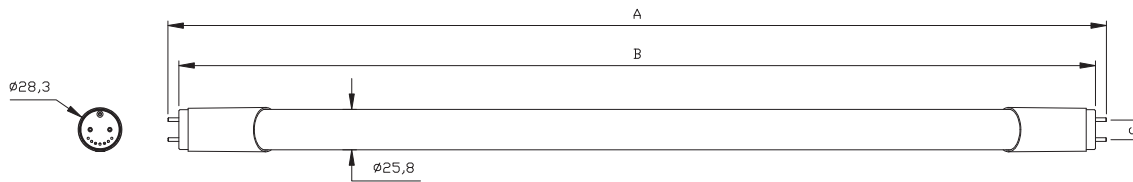
Applications



◆◆◆◆



Dimensions (unit:mm/inch)



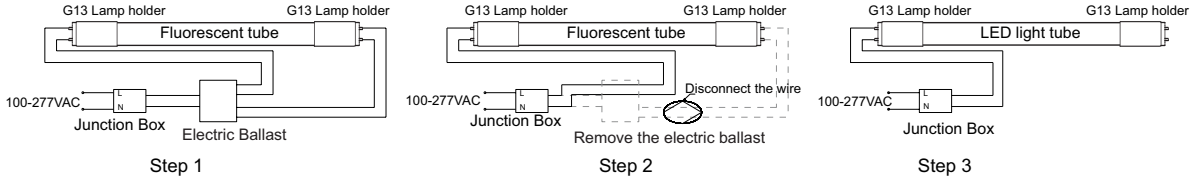
A: 0.6M=603mm/23.7" 1.2M=1213mm/47.7" 1.5M=1513mm/59.5"
 B: 0.6M=588mm/23.2" 1.2M=1198mm/47.2" 1.5M=1498mm/59.0"
 C: 12.7mm/0.5"

Specifications

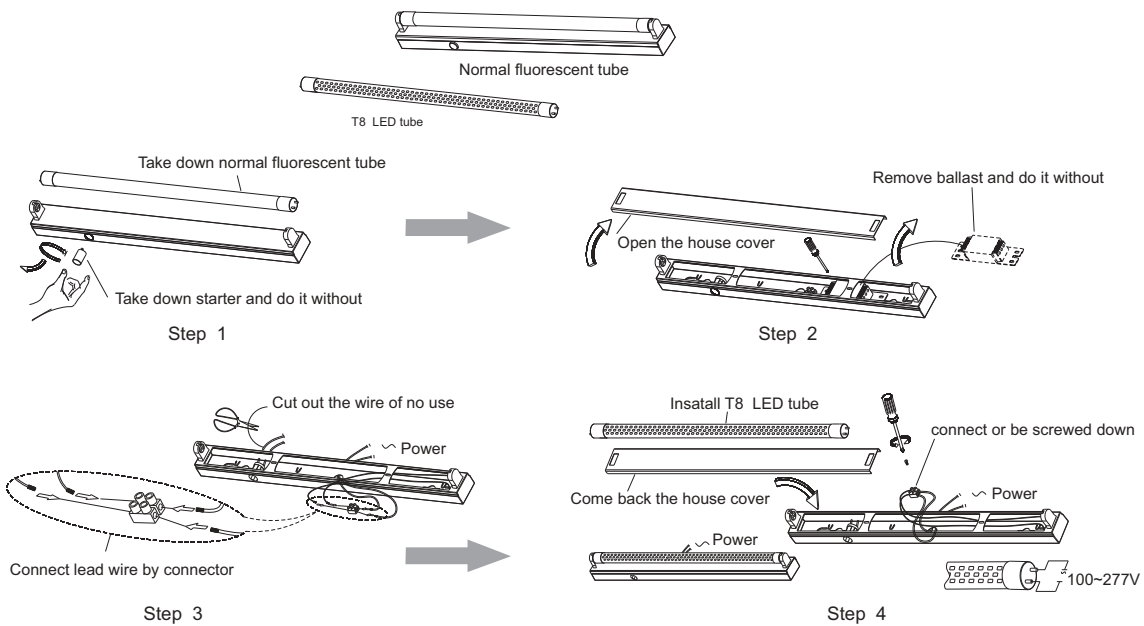
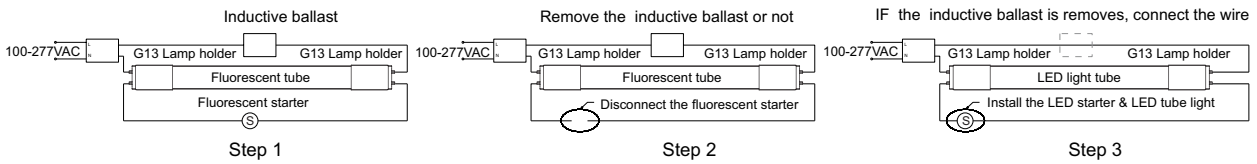
Type	Model number	Color	Length (cm)	Power (W)	Light output (lm±10%)	LED Q'ty	CRI	Voltage	PF	
Frosted (High brightness)	T8-009-AW-WW-03F	Warm White	60	9	1125	96	≥80	AC100-277V 50/60Hz	≥0.9	
	T8-009-AW-NW-03F	Natural white			1239					
	T8-009-AW-W-03F	White			1238					
	Frosted (High brightness)	T8-014-AW-WW-01F	Warm White	90	14	1425	144	≥80	AC100-277V 50/60Hz	≥0.9
		T8-014-AW-NW-01F	Natural white			1600				
		T8-014-AW-W-01F	White			1622				
	Frosted (High brightness)	T8-018-AW-WW-04F	Warm White	120	18	2155	168	≥80	AC100-277V 50/60Hz	≥0.9
		T8-018-AW-NW-04F	Natural white			2362				
		T8-018-AW-W-04F	White			2377				
Frosted (High brightness)	T8-022-AW-WW-02F	Warm White	150	22	2749	216	≥80	AC100-277V 50/60Hz	≥0.9	
	T8-022-AW-NW-02F	Natural white			3016					
	T8-022-AW-W-02F	White			2946					
Clear (High brightness)	T8-009-AW-WW-01C	Warm White	60	9	1245	96	≥80	AC100-277V 50/60Hz	≥0.9	
	T8-009-AW-NW-01C	Natural white			1365					
	T8-009-AW-W-01C	White			1359					
	Clear (High brightness)	T8-014-AW-WW-01C	Warm White	90	14	1439	144	≥80	AC100-277V 50/60Hz	≥0.9
		T8-014-AW-NW-01C	Natural white			1598				
		T8-014-AW-W-01C	White			1617				
	Clear (High brightness)	T8-018-AW-WW-01C	Warm White	120	18	2351	168	≥80	AC100-277V 50/60Hz	≥0.9
		T8-018-AW-NW-01C	Natural white			2565				
		T8-018-AW-W-01C	White			2567				
Clear (High brightness)	T8-022-AW-WW-01C	Warm White	150	22	3017	216	≥80	AC100-277V 50/60Hz	≥0.9	
	T8-022-AW-NW-01C	Natural white			3313					
	T8-022-AW-W-01C	White			3231					
Frosted (Normal brightness)	T8-009-AW-WW-04F	Warm White	60	9	789	48	≥80	AC100-277V 50/60Hz	≥0.9	
	T8-009-AW-NW-04F	Natural white			874					
	T8-009-AW-W-04F	White			858					
	Frosted (Normal brightness)	T8-014-AW-WW-02F	Warm White	90	14	1227	72	≥80	AC100-277V 50/60Hz	≥0.9
		T8-014-AW-NW-02F	Natural white			1403				
		T8-014-AW-W-02F	White			1417				
	Frosted (Normal brightness)	T8-018-AW-WW-05F	Warm White	120	18	1701	96	≥80	AC100-277V 50/60Hz	≥0.9
		T8-018-AW-NW-05F	Natural white			1873				
		T8-018-AW-W-05F	White			1894				
Frosted (Normal brightness)	T8-022-AW-WW-03F	Warm White	150	22	1997	120	≥80	AC100-277V 50/60Hz	≥0.9	
	T8-022-AW-NW-03F	Natural white			2250					
	T8-022-AW-W-03F	White			2340					
Clear (Normal brightness)	T8-009-AW-WW-02C	Warm White	60	9	892	48	≥80	AC100-277V 50/60Hz	≥0.9	
	T8-009-AW-NW-02C	Natural white			988					
	T8-009-AW-W-02C	White			986					
	Clear (Normal brightness)	T8-014-AW-WW-02C	Warm White	90	14	1356	72	≥80	AC100-277V 50/60Hz	≥0.9
		T8-014-AW-NW-02C	Natural white			1550				
		T8-014-AW-W-02C	White			1550				
	Clear (Normal brightness)	T8-018-AW-WW-02C	Warm White	120	18	1867	96	≥80	AC100-277V 50/60Hz	≥0.9
		T8-018-AW-NW-02C	Natural white			2066				
		T8-018-AW-W-02C	White			2078				
Clear (Normal brightness)	T8-022-AW-WW-02C	Warm White	150	22	2326	120	≥80	AC100-277V 50/60Hz	≥0.9	
	T8-022-AW-NW-02C	Natural white			2550					
	T8-022-AW-W-02C	White			2541					

Installation Drawing

Installation with Electric Ballast



Installation with Inductive Ballast



! Notice

Installation information:

Power must be cut off before installation, fix it on the position of installation holes, connection of the power supply must be sealed.

1. Please read the specification first, to make sure the service environment matches the condition in the specification before using.
2. Please confirm the applicable power supply before using.
3. Make sure the switch of product is off before connect to the power supply to prevent electric shock.
4. Operation against rules may damage your property even harm to your personal safety.
5. Dangerous high voltage, Non-professionals are not allowed to maintain the products.

If the exterior flexible cable or wire is damaged, it must exchange by the supplier, its agent or other similar qualified personnels to avoid dangers.